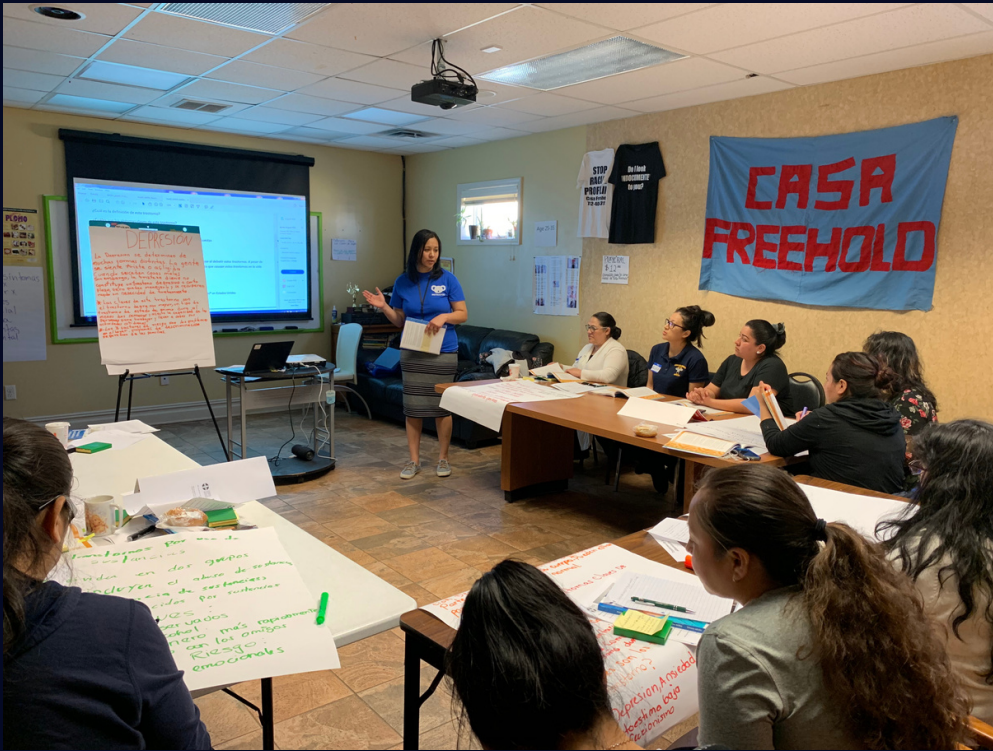


# MAXIMIZING IMPACT ON THE FRONT LINES OF PUBLIC HEALTH



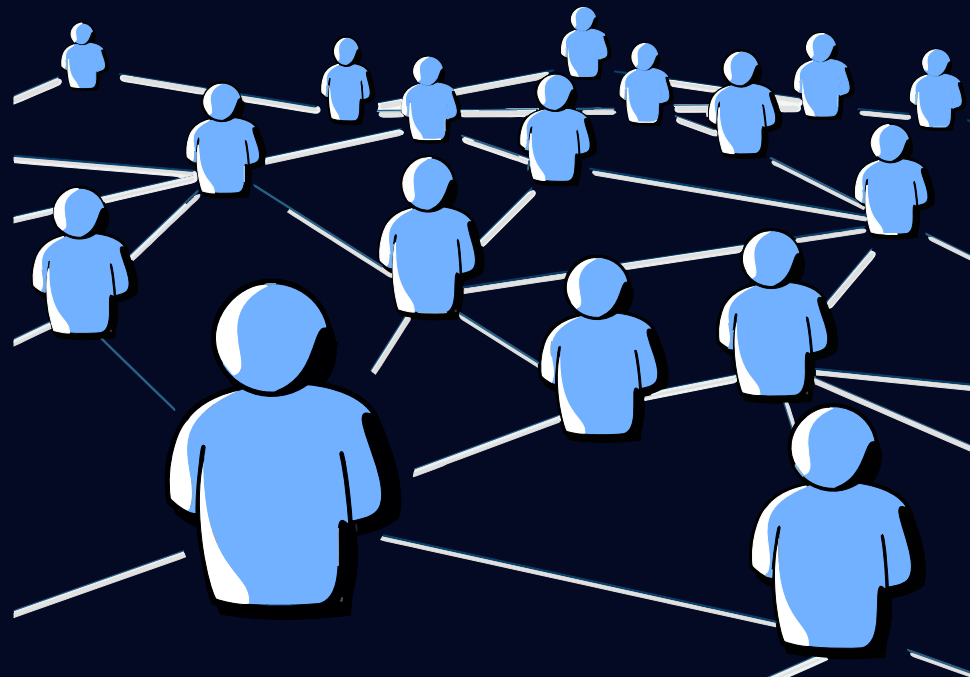
# ROLES



Education and  
Awareness



Case  
investigation



Resource Person



# CHALLENGES IN UNDERSERVED COMMUNITIES

## **Inequalities**

Social determinants of Health

## **Social Stigma**

Stigma is discrimination against an identifiable group of people, a place, or a nation. Stigma is associated with a lack of knowledge about how COVID-19 spreads, a need to blame someone, fears about disease and death, and gossip that spreads rumors and myths. (CDC)



# CHALLENGES IN UNDERSERVED COMMUNITIES, CONT'D

## Health Literacy & Cultural Competency

### SÍNTOMAS DEL COVID-19



TOS



FIEBRE



CANSANCIO



DOLOR DE CABEZA



DOLOR DE GARGANTA



SECRECIÓN NASAL



CONGESTIÓN NASAL



FATIGA



DIFICULTAD AL RESPIRAR



DIARREA

NO SIEMPRE SE PRESENTAN TODOS LOS SÍNTOMAS. EN ALGUNOS CASOS NO APARECE NINGUNO... SI USTED PRESENTA ALGUNO ESTOS SÍNTOMAS SE RECOMIENDA BUSCAR ATENCIÓN MÉDICA

Alewis



**THANK YOU!**